

TTK LOGISTICS



Company Profile

Company Name TTK LOGISTICS(THAILAND) CO., LTD

President Mr. Ryu Tohi

Toyota Tsusho Thai Holdings 51%

Shareholder **T**oyota Tsusho Corporation : 26%

Kimura Unity Co., Ltd. : 23%

Establishment December 2002

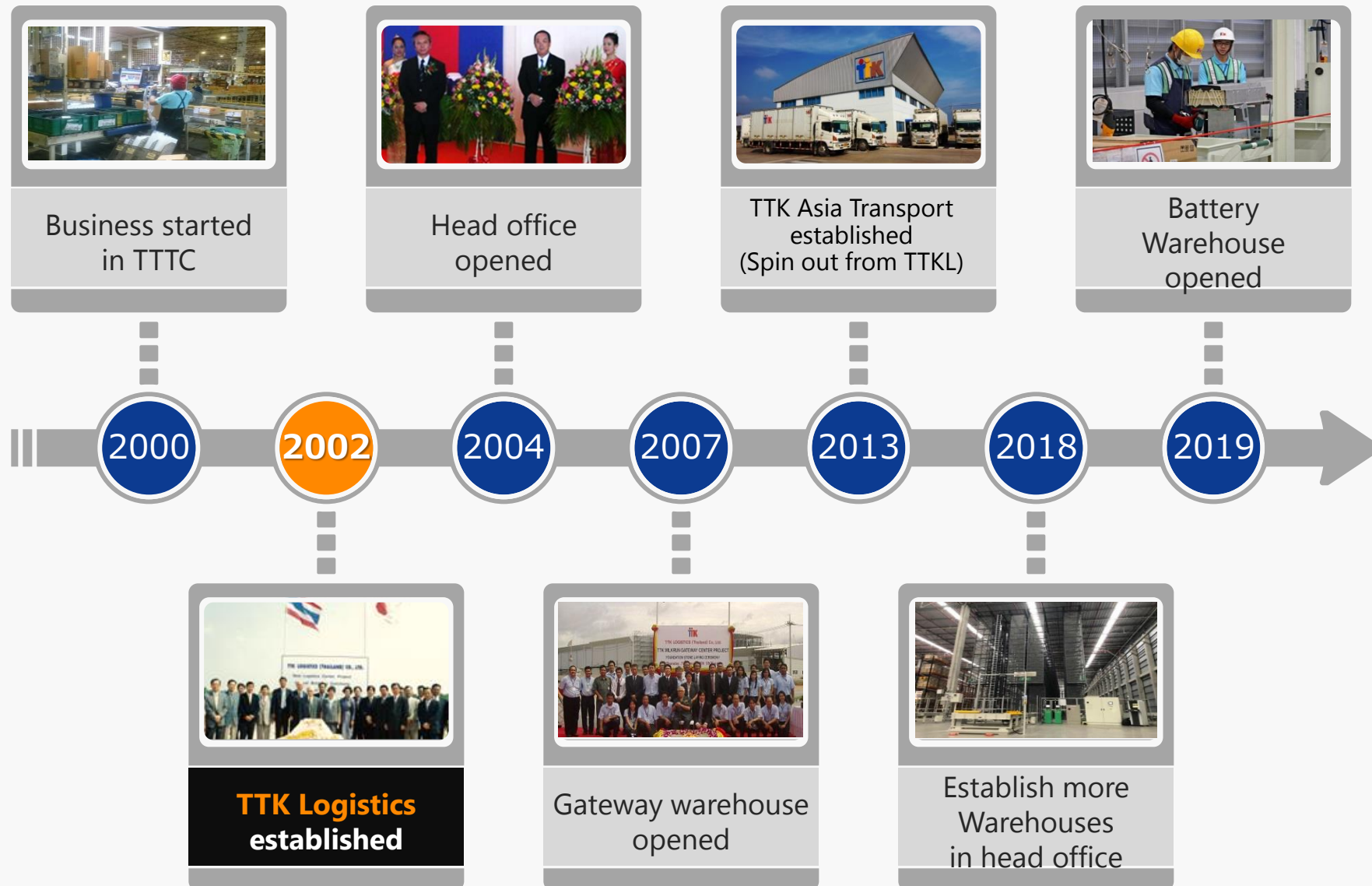
Capital 350 Million THB

Employee 1,255 (4 Japanese)

Business Scale 8 warehouses



Company History



Organization Chart

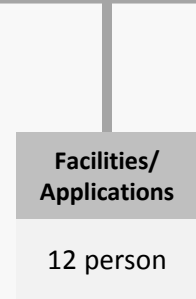
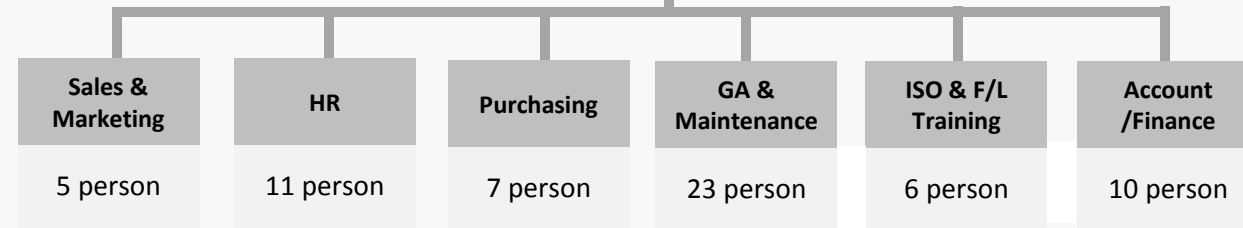
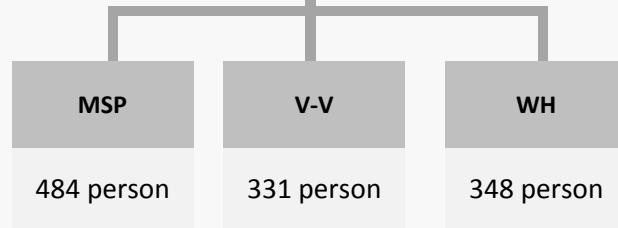
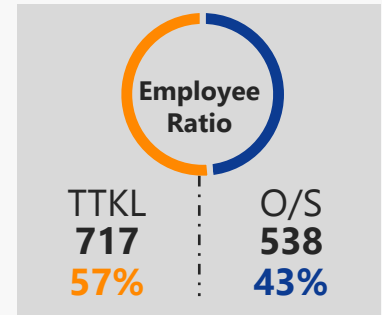


Total
1,255 people
(as of January 2025)

Mr. Nakamura SMC
Mr. Kamikariya MCO
Mr. Kato CO



President
Mr. Ryu Tohi



Total of **1,255 person** (As of January 2025)

Location



Total space: **130,472 M2**

- 1 VV/BOC/BAC
- Amatanakorn

Export /General
Warehouse
36,028 m2

- 2 MSP
- Amatanakorn

On-site Logistics
(Export Packing)
16,000 m2

- 3 SNS
- Amatanakorn

General Warehouse
7,200 m2

- 4 GOC
- Gateway

General Warehouse
10,000 m2

- 5 EOC
- Eastern Seaboard

General Warehouse
11,200 m2

- 6 ELC(Electrolux)
- Rayong

On-site
Logistics/VMI
18,720 m2

- 7 LOC (Yanmar)
- Lat Krabang

On-site Logistics
/SPS/Sequence
15,500 m2

- 8 MSP 3
- Gateway

On-site Logistics
15,824 m2

Valued Customer



BRIDGESTONE



DNP

 **Electrolux**



Koito

Nitto

KOBELCO



 **BorgWarner**

u-shin



ionex



■ V to V (Parts contained in commercial flow of Toyota Tsusho)

Cubic volume **For the 25 countries
23 FEU/day**

Space **16,570 m²**

Packaging line **38 lines**

Forklift **27 units**



V-V export packing



V-V export packing line

Yokoten of distribution scheme created with Toyota motor

Business Contents –Export Packing

MSP Amata (Parts contained in commercial flow of Toyota)

Cubic volume **For the 14 countries
60 FEU/day**

Space **16,000 m²**

Packaging line **13 lines**

Forklift **16 units**



MSP export packing



MSP export packing line

MSP Gateway (Parts contained in commercial flow of Toyota)

Cubic volume **For the 11 countries
60 FEU/day**

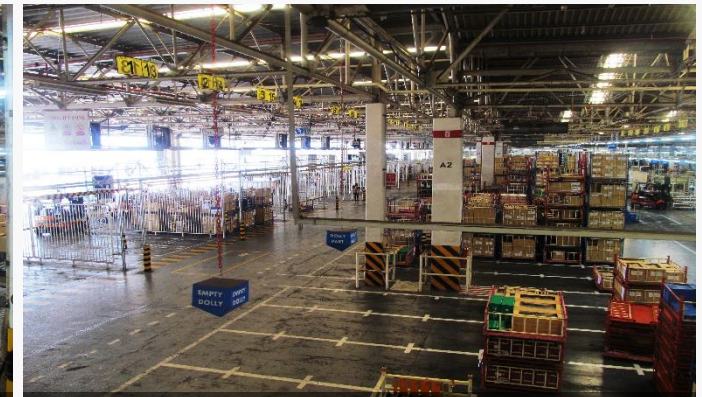
Space **15,824 m²**

Packaging line **15 lines**

Forklift **17 units**



MSP export packing



MSP export terminal

Yokoten of distribution scheme created with Toyota motor

Business Contents –In-plant distribution



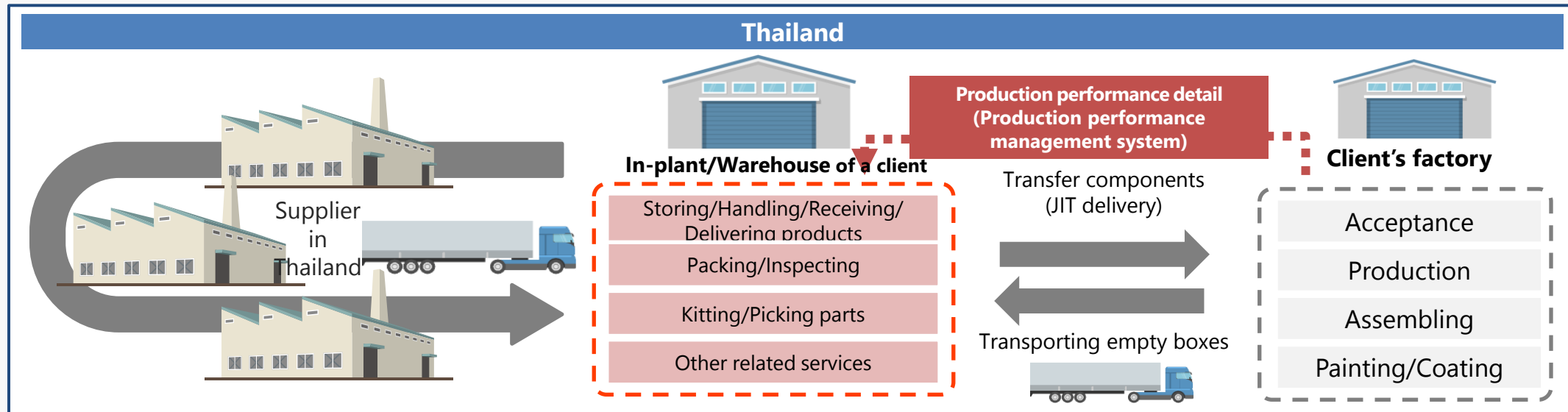
YANMAR

Handled goods **Agricultural machinery component**

Space **15,500 m²**



Overall flow Provides know-how/logistic device/system/human resource for client's plant/warehouse



Improves client's in-plant work efficiency using our resources

Business Contents –VMI management

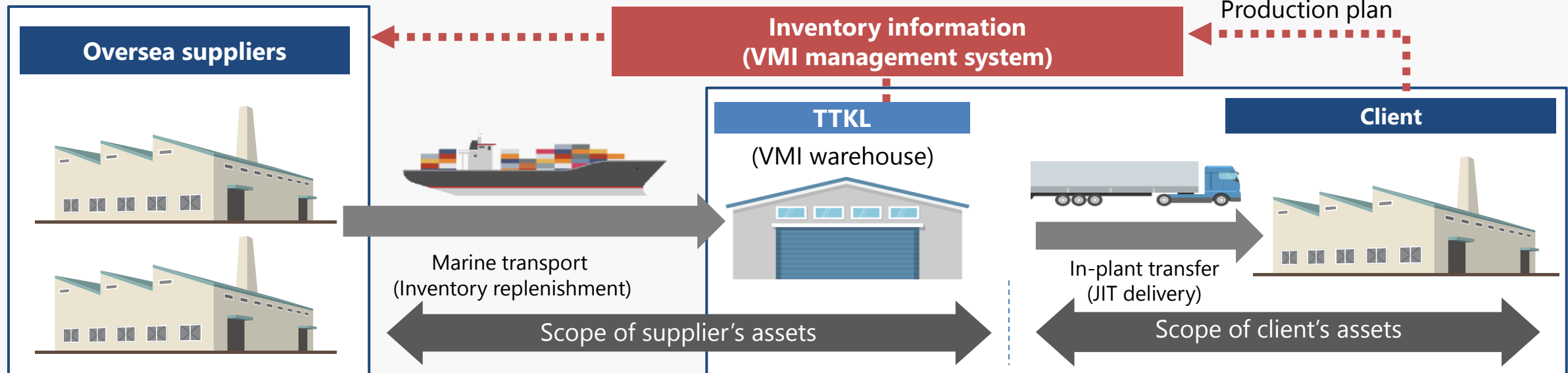
ELECTROLUX

Handled goods **Home electronics component**

Space **18,720 m²**



Overall flow Providing VMI warehouse management and VMI management system at the client's warehouse



**Large reduction on inventory through our VMI service
(human resource and system)**

General warehouse

Space **59,858 m²**

Forklift **35 units**

No. of bases **8 bases**



Material procurement

(Material procurement achievement)

Agency service for material procurement that takes advantage of the amount handled by our company

Cubic volume of packing **Appx. 23,000 boxes/day**

Material stock numbers **412 stock numbers (Box, partition, rust-inhibitor, etc.)**

Supplier of material **24 suppliers**



Flexible response to various demands around logistics



CORPORATE OUTLINE

Company Name : TTK LOGISTICS (THAILAND) CO., LTD.

H/O Address : 700/189 Moo 1 Bankhao. Panthong, Chonburi 20160

Establishment : December, 2004

Telephone : +66 38 468020 #145 #146

E-mail : marketing@ttkl.co.th

URL : <http://www.ttkl.co.th/>